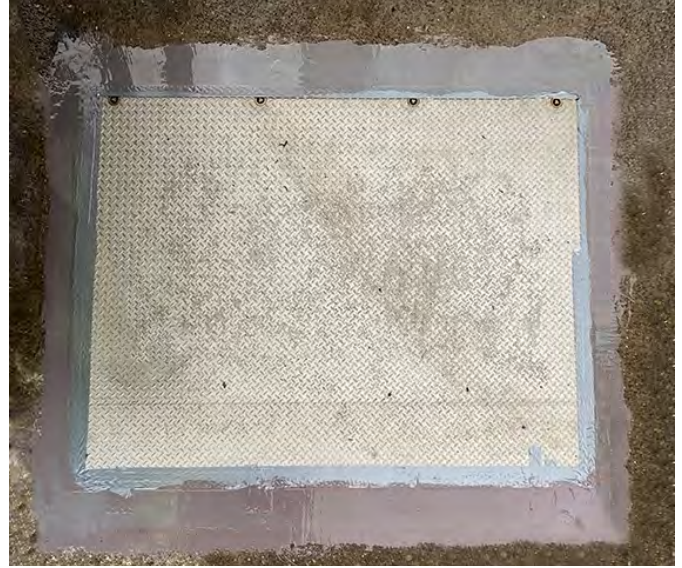


resiTwin EP



resiTwin EP is an easy-to-use, two-component, flowable epoxy resin supplied in double cartridges.-

Fields of application include the sealing of joints and transitions, the filling of cavities, e.g. in sewage structures, and the bonding of components.

Product features:

- flowable
- permanently flexible after curing
- fast curing
- easy application thanks to cartridge system
- can be injected manually with injection gun (e.g. resiGun)
- physiologically harmless (after curing)

Processing information:

Surface preparation: The substrate must be clean and free of loose material, dust, oil, grease and substances that could interfere with adhesion. It can be dry or moist. The substrate must be loadbearing and must have the generally requested tear strength of 1,5 N/mm².

Mixing: Resin and hardener components of resiTwin EP are supplied in coordinated quantities in double cartridges and are force-mixed with the aid of an injection gun (e.g. resiGun) via a static mixer (type Quadra medium with bayonet lock). Complete emptying of the containers is necessary for ecological reasons.

Processing: Usually resiTwin EP is applied manually by means of an injection gun (e.g. resiGun) into the damaged area or onto the components to be bonded. The curing time is approx. 45 minutes at 10 °C. During the curing time, the tools can be cleaned with resiClean TOOLS or an equivalent cleaner. After curing, cleaning is only possible with resiClean EPOXYKILLER (wear protective goggles!).

Special notes: Contact with UV radiation can lead to colour changes. This normally does not affect the usability.

Safety instructions: Please observe the hazard information and safety advice on the labels and safety data sheets!

Technical characteristics of **resiTwin EP**

Base	Epoxy resin
Colour	grey
Number of components	2
Mixing ratio	resin : hardener = 1 : 1 (volume)
Specific weight (mixture)	≈ 1,37 g/cm ³
Pot life (at 20 °C)	approx. 15 minutes
Curing time (at 10 °C)	approx. 45 minutes
Chemical resistance	pH2 to pH12
Cleaning	with resiClean SURFACE (degreasing of the substrate) with resiClean TOOLS (uncured epoxy resin) with resiClean EPOXYKILLER (cured epoxy resin)
Consumption	as required
Complete chemical resistance	after 7 days / cartridges are reclosable
Operating conditions	ideal material temperature for mixing: 20°C application temperature 5 to 35 °C
Storage	store dry, frost-free and not above 35 °C, protect from direct sunlight
Shelf life	6 months if the conditions mentioned above are fulfilled, after this period an increasing of the viscosity is possible.
Disposal	Fully cured residues (mixture) may be disposed as „plastic parts“.

If not mentioned separately, indicated figures are valid at a temperature of 20°C and a relative humidity of 50 %.

Note: All details provided in this datasheet are based on our experiences and are true to the best of our knowledge but without engagement. The given values are to be regarded as a guideline as they depend on the local circumstances and the conditions on site. Recommendations differing from our data sheets are only mandatory if confirmed by us in written form.