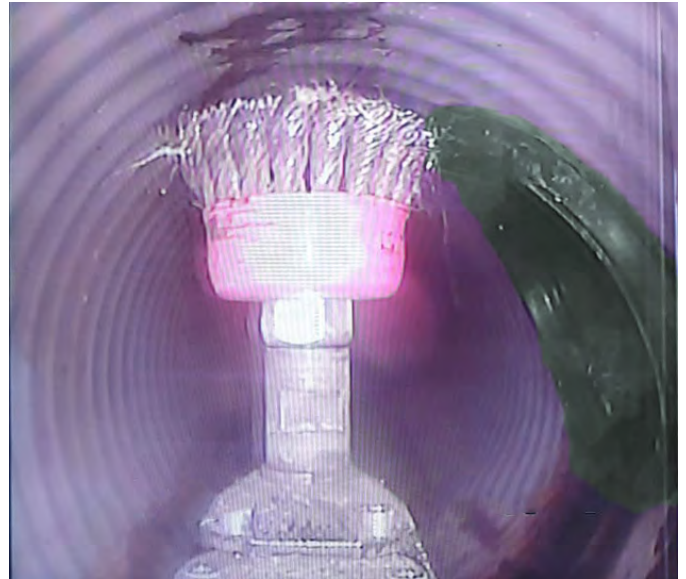


SIDELINER™ thix



SIDELINER™ is a two-component thixotropic Epoxy resin system for impregnating needle felt hats used for the robotic repair of lateral connections.

Fields of application are the repair of leaking lateral connections and the reattachment of lateral connections after hose liner rehabilitation with robotic systems.

Product features:

- Drip tendency strongly reduced
- Suitable for damp, mineral substrates
- Good adhesion to concrete, masonry, stoneware and metal as well as to liners
- Physiologically harmless (after curing)
- With hardener RE60 temperature resistant up to 45°C
- For higher temperature requirements use with hardener RE80 or RE90

Processing information:

Surface preparation: The substrate must be clean and free of loose material, dust, oil, grease and substances that could interfere with adhesion. It can be dry or moist. The substrate must be loadbearing and must have the generally requested tear strength of 1,5 N/mm².

Mixing: SIDELINER™ thix resin and hardener are supplied in containers with matching quantities. If delivered in tin canisters both components must be carefully mixed homogeneously using slow-running mechanical stirring equipment (e.g. Collomix Xo 55 duo). The minimum mixing time is two minutes. Complete emptying of the containers is essential to maintain the mixing ratio and is necessary for ecological reasons. If delivered in double cartridges resin and hardener are to be mixed through a static mixer (Type: Round L with bayonet connection) using a dispenser gun (e.g. resiGun). For ecological reasons the cartridges have to be completely emptied before disposal.

Processing: Usually SIDELINER™ thix is applied manually to the top hat profile. The pot life and the processing times vary depending on the hardener type (see table on page 2).

Special notes: Contact with UV radiation can lead to colour changes. This does not affect the suitability for use.

Safety instructions: Please observe the hazard statements and safety advice on the labels and safety data sheets!

Technical characteristics of **SIDELINER™** thix

Base	Epoxy resin
Colour	resin: green; hardener: yellowish transparent
Number of components	2
Mixing ratio	bucket/Canister: resin : hardener RE38 = 2,5 : 1 (weight) resin : hardener RE60 = 2,5 : 1 (weight) double cartridges: resin : hardener RE38 = 2 : 1 (volume)
Specific weight (mixture)	≈ 1,25 g/cm ³
Pot life (at 20 °C)	with hardener RE38: approx. 20 minutes with hardener RE60: approx. 30 minutes
Curing time (at 10 °C)	with hardener RE38: 2,5 hours (45 minutes at 60°C) with hardener RE60: 4 - 5 hours (55 minutes at 60°C)
Chemical resistance	pH2 to pH12
Cleaning	with resiClean TOOLS (uncured epoxy resin) with resiClean EPOXYKILLER (cured epoxy resin)
Consumption	as required
Complete chemical resistance	after 7 days
Temperature resistance	up to 45 °C with hardener RE60 high temperature version up to 120 °C on request
Operating conditions	ideal material temperature for mixing 20 °C Application temperature 5 to 35 °C
Storage	dry, frost-free and not above 35 °C, protect from direct sunlight
Shelf life	under the above conditions up to 6 months; thereafter separations and viscosity increases possible
Disposal	Cured resin residues (mixture) can be disposed of as plastic (waste code number 120105).

Unless otherwise stated, these data apply to a temperature of 20°C and a relative humidity of 50%.

Note: The information in this data sheet has been provided on the basis of our experience to the best of our knowledge, but is not binding. Use outdoors or on the construction site may cause a shift in the characteristic values. Recommendations that deviate from the information in our data sheets are only binding for us if they have been confirmed by us in writing.